

Orion A

Six point star on a twill background, with a tubular border



You will need:

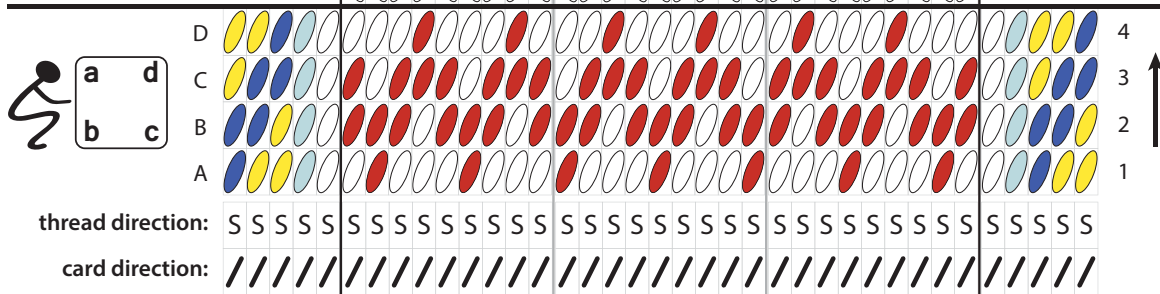
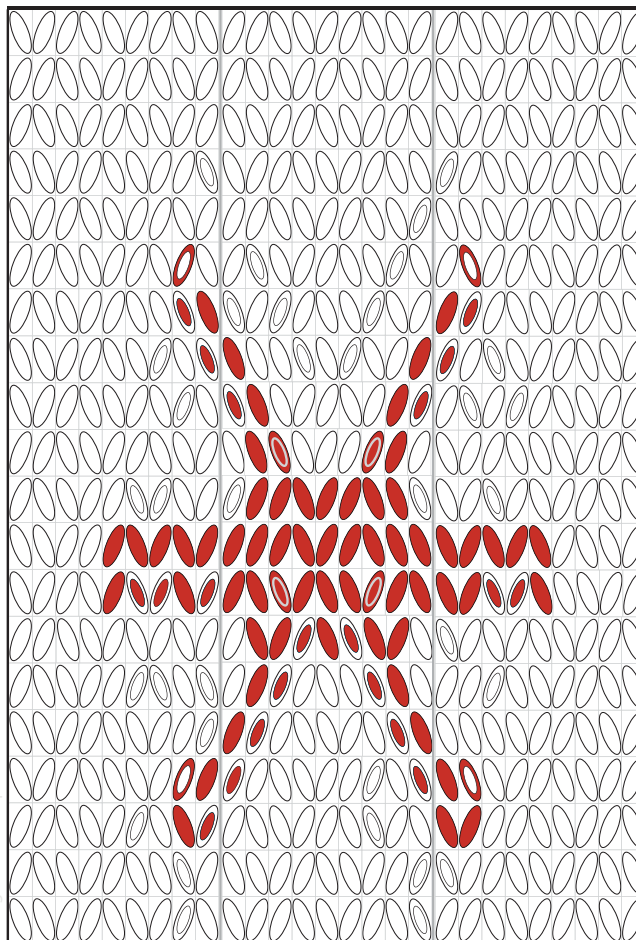
37 cards

148 Threads:

- 54 foreground
- 62 background
- 8 border A
- 12 border B
- 12 border C

Key:

- ¼ turn forward
- ¼ turn backward
- ½ turn forward
- ½ turn backward



Tips & customisations

Flat border: The sample has a tubular border made from the outermost 3 cards on each side. To make a band of about the same width with a flat border, don't use cards 1+37.

Design overlapping border: some weavers find that the pattern area 'encroaches' on the innermost border card, when the warp floats over more than one pick. In this threading, the innermost border cards match the pattern background to help avoid the issue. If this isn't a problem for you, leave out cards 5 + 33 when setting up.

Thickness of weft thread: Use a thinner thread for the weft than what you choose for the warp. This sample was worked with a warp of hakelgarn 100 crochet cotton (about no11) and a weft of two strands of standard sewing thread held together.

Color of weft: match the weft to the background color.

Half turns: the color you should end up with is the color of the central oval. e.g. card 14 on row 3 - red should be showing after the card is turned.