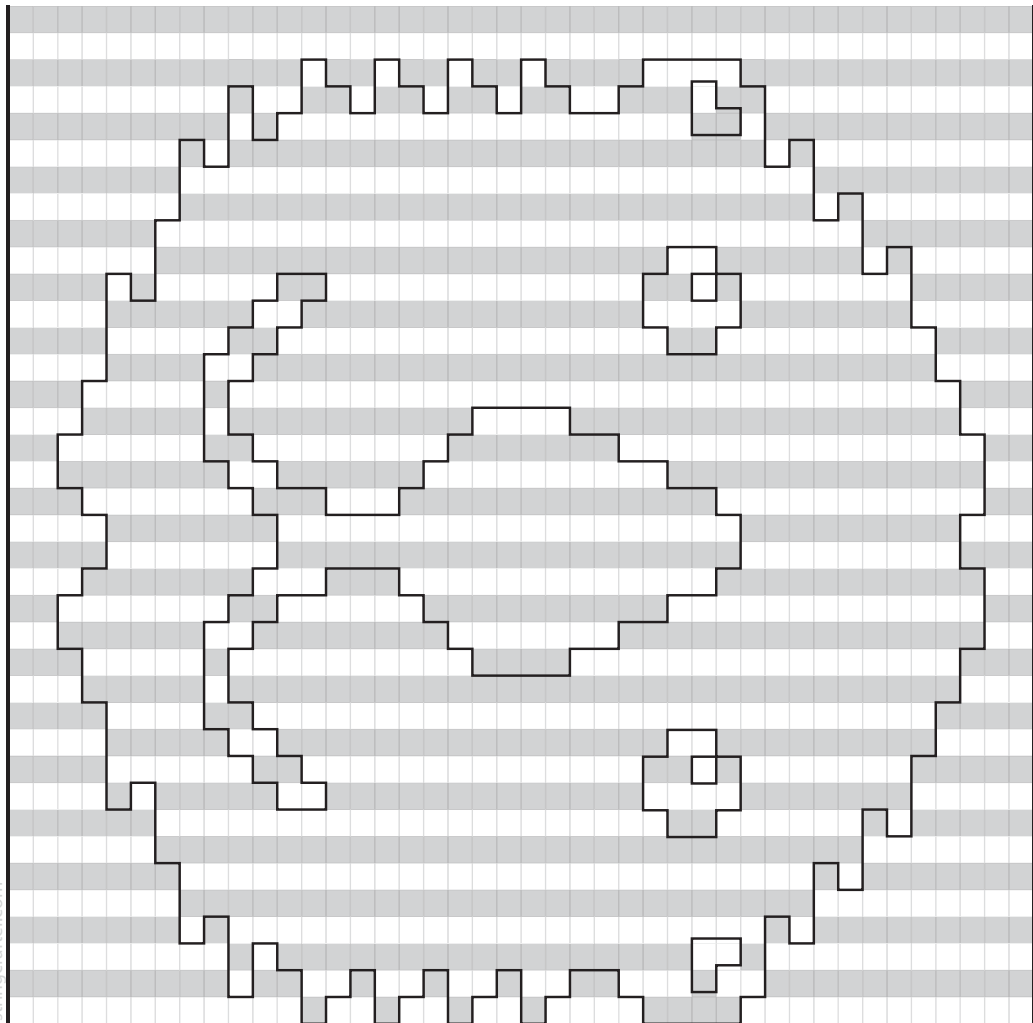


Otter's head cabossed

Doubleface chart for an otter's head, without neck



You will need:

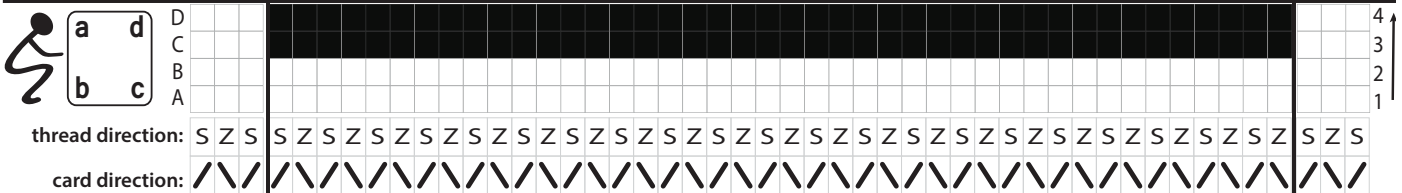
48 cards

192 Threads:

- 84 foreground
- 108 background

Key:

- ¼ turn forward
- ¼ turn backward
- design outline



Notes

- Each cell/rectangle represents one card and two rows.
- The border cards are included in the threading diagram. They do not appear in the chart. They always turn forward.
- The design outline shows the points where the color changes from foreground to background & vice versa. It is not a turning instruction.

Starting at the bottom of the chart:

Rows 1 + 2: Turn background pattern cards and border cards forwards. Turn foreground pattern cards backwards.

Rows 3 + 4: Turn background pattern cards backwards and all other cards forwards.

And so on...