

Tablet Weaving: **4-Hole Patterns**

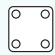


# A Scattering of Oak Leaves

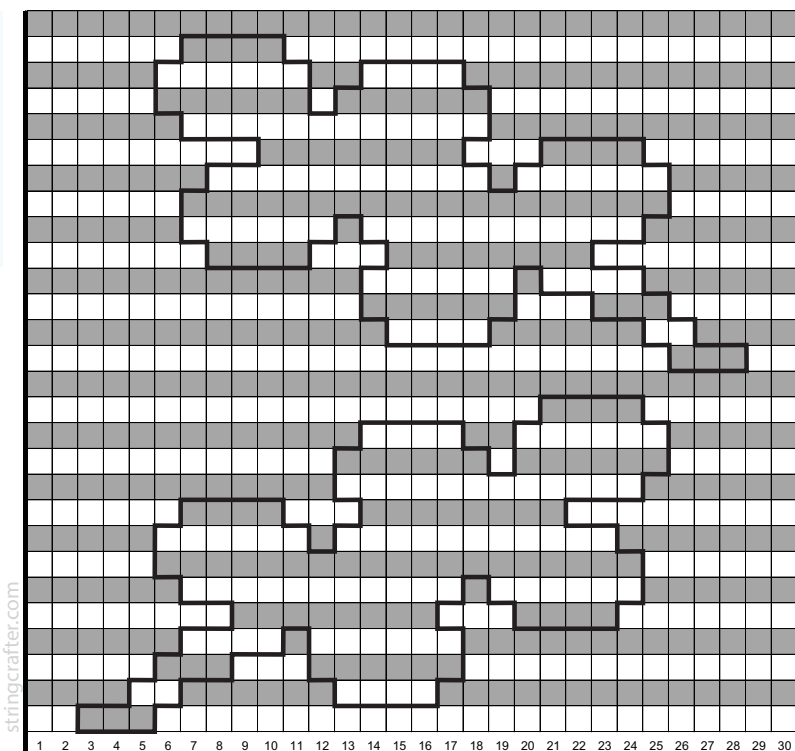
*Stringcrafter*

One chart: many different bands

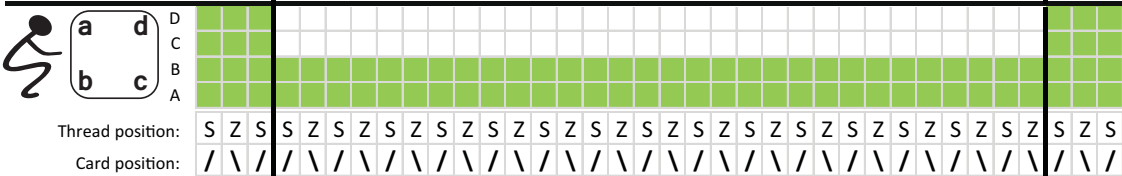


**You will need:**

-  36 cards
- 144 Threads:**
  -  60 foreground
  -  84 background



Picks	Turns for pattern cards
55+56:	All B
53+54:	6F 4B 20F
51+52:	5B 6F 2B 4F 13B
49+50:	5F 6B 1F 6B 12F
47+48:	6B 12F 12B
45+46:	9F 8B 3F 4B 6F
43+44:	7B 11F 1B 6F 5B
41+42:	6F 19B 5F
39+40:	6B 6F 1B 11F 6B
37+38:	7F 4B 3F 8B 8F
35+36:	13B 6F 1B 4F 6B
33+34:	13F 6B 3F 3B 5F
31+32:	14B 4F 6B 2F 4B
29+30:	25F 3B 2F
27+28:	All B
25+26:	20F 4B 6F
23+24:	13B 4F 2B 6F 5B
21+22:	12F 6B 1F 6B 5F
19+20:	12B 12F 6B
17+18:	6F 4B 3F 8B 9F
15+16:	5B 6F 1B 11F 7B
13+14:	5F 19B 6F
11+12:	6B 11F 1B 6F 6B
9+10:	8F 8B 3F 4B 7F
7+8:	6B 4F 1B 6F 13B
5+6:	5F 3B 3F 6B 13F
3+4:	4B 2F 6B 4F 14B
1+2:	2F 3B 25F



## Notes

- Each cell/rectangle represents one card and two rows.
- The border cards are included in the threading diagram. They do not appear in the pattern chart. They always turn forward.
- The design outline shows the points where the color changes from foreground to background & vice versa. It is not a turning instruction.

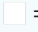


Starting at the bottom of the chart:

**Rows 1 + 2:** Turn background pattern cards and border cards forwards. Turn foreground pattern cards backwards.

**Rows 3 + 4:** Turn background pattern cards backwards and all other cards forwards.

And so on...

## Key:

-  = ¼ turn forward
-  = ¼ turn backward
-  = design outline

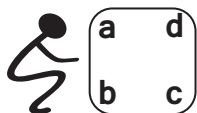
2F = turn the next two cards ¼ turn forward

5B = turn the next five cards ¼ turn backward

## The Bands

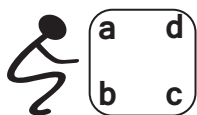
Here are five examples of bands that can be woven from the chart provided. Each band is displayed with the start of the band on the left. Color images show test pieces that were actually woven. The black and white image shows an accurate simulation of a band which was not tested.

### Band 1



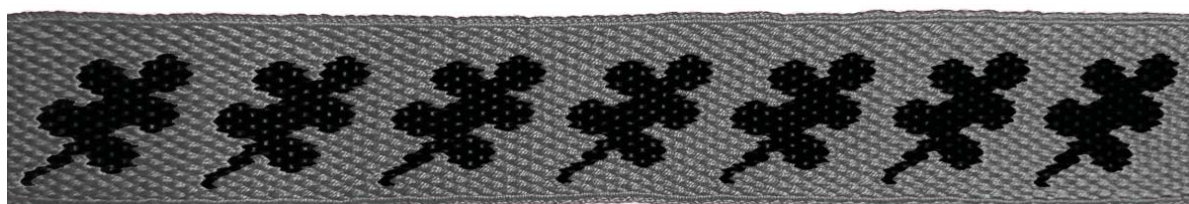
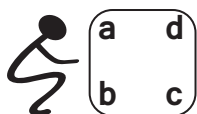
Work the entire chart as shown

### Band 2



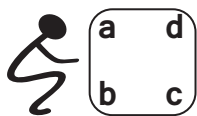
Work picks 1 to 28 only.

### Band 3



Work picks 29 to 56 only.

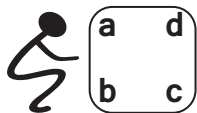
### Band 4



Set up the warp as normal, then:

1. Starting at pick 26, work picks 26 to 1 (in reverse order), down the chart.
2. Work picks 3 to 28 as normal, up the chart.
3. Starting at pick 54, work picks 54 to 29 (in reverse order), down the chart.
4. Work picks 31 to 56 as normal, up the chart.
5. Repeat steps 1 to 4 to the end of the band.

### Band 5



As for band 4, set up the warp as normal, but then repeat steps 1 and 2 only.