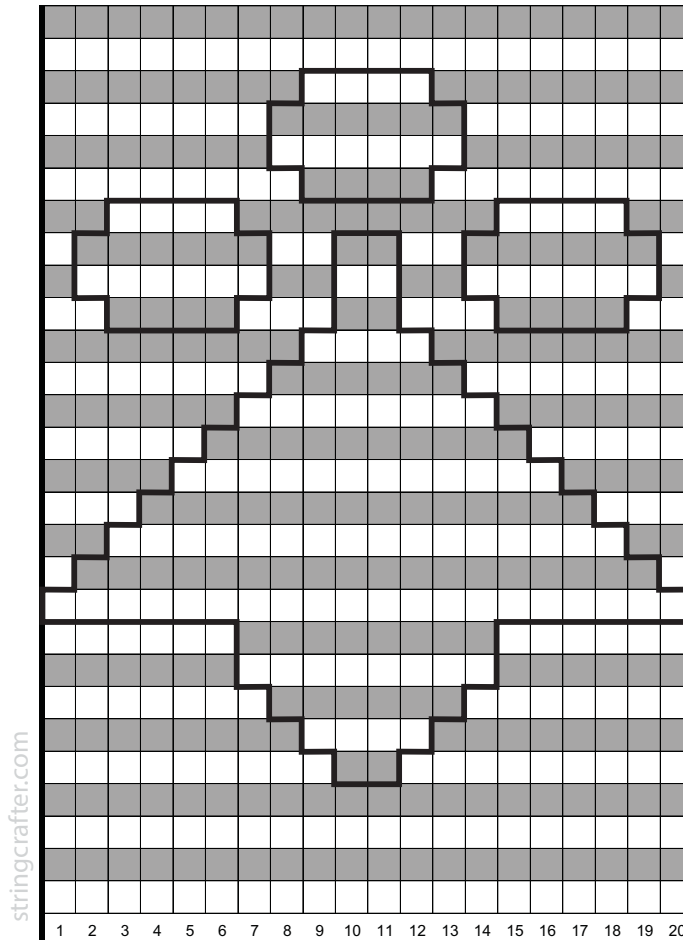
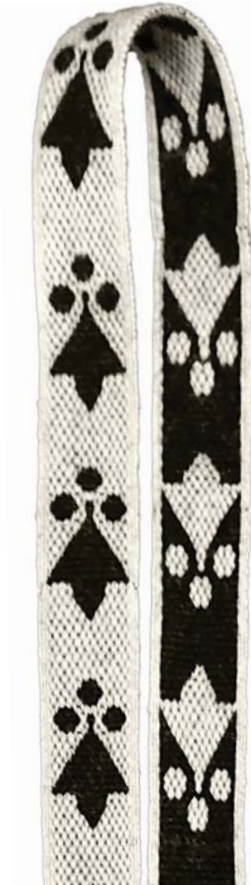


## Tablet Weaving: 4-Hole Patterns

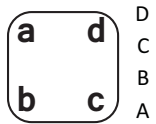
# Ermine 2

*Stringcrafter*

Doubleface charts for ermine points running parallel to the edge of the band, with plain borders



Picks	Turns for pattern cards
55+56:	All B
53+54:	All F
51+52:	8B 4F 8B
49+50:	7F 6B 7F
47+48:	7B 6F 7B
45+46:	8F 4B 8F
43+44:	2B 4F 8B 4F 2B
41+42:	1F 6B 2F 2B 2F 6B 1F
39+40:	1B 6F 2B 2F 2B 6F 1B
37+38:	2F 4B 3F 2B 3F 4B 2F
35+36:	8B 4F 8B
33+34:	7F 6B 7F
31+32:	6B 8F 6B
29+30:	5F 10B 5F
27+28:	4B 12F 4B
25+26:	3F 14B 3F
23+24:	2B 16F 2B
21+22:	1F 18B 1F
19+20:	All F
17+18:	6F 8B 6F
15+16:	6B 8F 6B
13+14:	7F 6B 7F
11+12:	8B 4F 8B
9+10:	9F 2B 9F
7+8:	All B
5+6:	All F
3+4:	All B
1+2:	All F



D																			
C																			
B																			
A																			
Thread position:	S	Z	S	Z	S	Z	S	Z	S	Z	S	Z	S	Z	S	Z	S	Z	S
Card position:	/	\	/	\	/	\	/	\	/	\	/	\	/	\	/	\	/	\	/

- You will need:**
- 36 cards
  - 144 Threads:**
    - 60 foreground
    - 84 background

### Notes

- Each cell/rectangle represents one card and two rows.
- The border cards are included in the threading diagram. They do not appear in the pattern chart or written turning instructions. They always turn forward.
- The design outline shows the points where the color changes from foreground to background & vice versa. It is not a turning instruction.
- Rows (picks) 1 to 8 and 53 to 56 are plain doubleface with no foreground pattern.

Starting at the bottom of the chart:

**Rows 1 + 2:** Turn background pattern cards and border cards forwards. Turn any foreground pattern cards backwards.

**Rows 3 + 4:** Turn background pattern cards backwards and all other cards forwards. And so on...

**Key:**

- = ¼ turn forward
- = ¼ turn backward
- = design outline
- 2F = turn the next two cards ¼ turn forward
- 5B = turn the next five cards ¼ turn backward